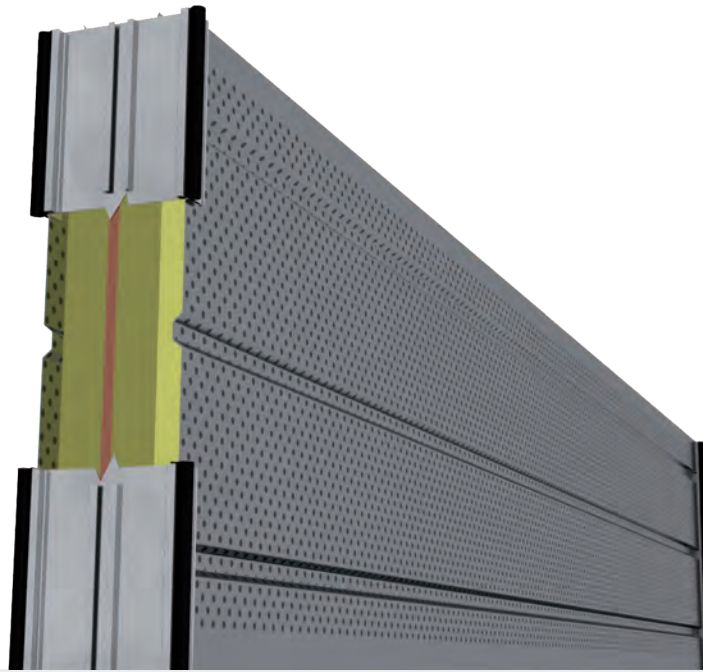


Type A3-b

Aluminium sound panels
double-sided highly absorbent



Sound absorption

DIN EN 1793-1: DL_A

12 dB = A4

Airborne sound insulation

DIN EN ISO 140-3: R'_W

30 dB

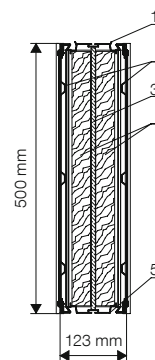
DIN EN 1793-2: DL_R

25 dB = B3

TECHNICAL DATA

L = (mm)	m = (kg/piece)
Standard lengths	
1.96	27.00
2.46	34.00
2.96	41.00
3.96	54.00
4.96	68.00
Ø ≈	27.50 (kg/m ²)

Special lengths / heights possible



- 1 Upper Profile
- 2 Side Sheet, Perforated
- 3 Wood Cement Fibreboard
- 4 Mineral Wool
- 5 Lower Profile

Design and dimensions according to ZTV-Lsw 06

Standard mounting with HE_series 160 - 240 posts