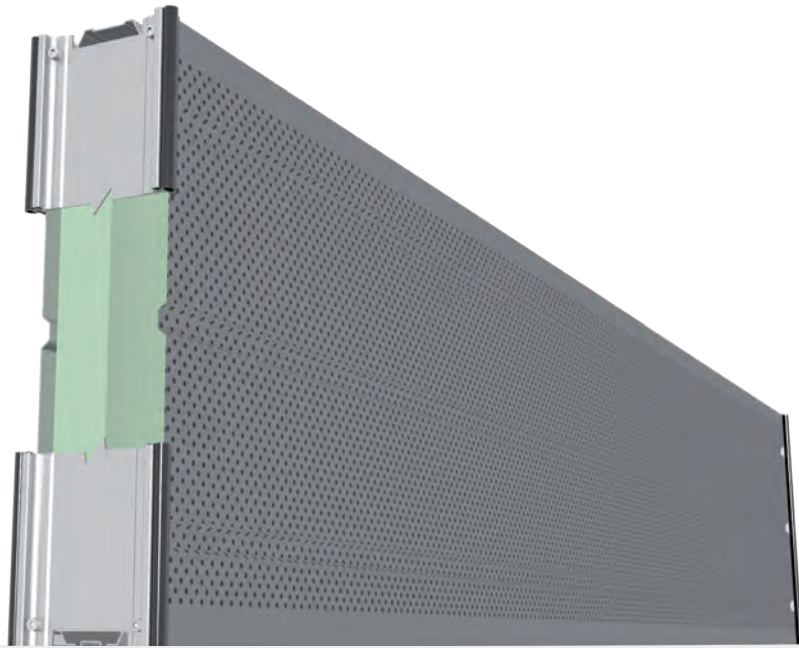


# Type A3-e (DB-88)

Aluminium sound panels  
single-sided highly absorbent



## Sound absorption

DIN EN 1793-1:  $DL_A$

**9 dB = A3**

## Airborne sound insulation

DIN EN ISO 140-3:  $R'_W$

**30 dB**

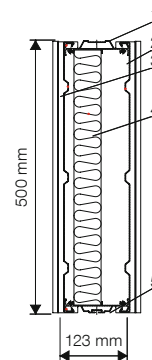
DIN EN 1793-2:  $DL_R$

**25 dB = B3**

## TECHNICAL DATA

L = (mm)	m = (kg/piece)
Standard lengths	
1.95	19.00
2.45	24.00
2.95	28.00
3.95	38.00
4.95	47.00
$\varnothing \approx$	19.00 (kg/m <sup>2</sup> )

Special lengths / heights possible



- 1 Upper Profile
- 2 Side Sheet, Perforated
- 3 Side Sheet, Non-Perforated
- 4 Mineral Wool
- 5 Lower Profile

Design and dimensions according to RIL 804.5501

EBA homologation numbers:

**21.51-21izbia/030-2101#004-(007/18-ZUL)**

Standardeinbau in Pfosten der HE\_Reihe 160 - 220